

MUNICIPAL PROFILE OF SAN FRANCISCO SAN FRANCISCO, CEBU , PHILIPPINES

- 1. Name and address: Municipality of San Francisco**
- 2. Date of creation: 1928**
- 3. Main fields of activity: Governance**
- 4. Size and structure (if applicable): 10,597 square meter**

Municipal Structure

(See attached: Attachment I-Municipal Structure of San Francisco)

5. Funding Resources:

Annual Budget (International Revenue Allotment) : 59,436,223

6. Name of Head of Institution: Municipal Mayor Aly Aranas Arquillano

Municipal Profile of San Francisco.

San Francisco is 38 nautical miles of Cebu city in Central Philippines. It is a small piece of paradise. A general small island in northeast of mainland, Cebu. This third class municipality sprawls 124°14'04" to 124°30'37" and 10°32'48" latitude . The municipality is bounded on the north, south, and west by the shark infested Camotes Sea and on the east by Ponson Island (municipality of Poro). The municipality composed of 15 barangays namely: Barangay Campo, Cabunga-an, Consuelo, Esperanza, Himensulan, Southern Poblacion, Northern Poblacion, Western Poblacion, Sonog, Union, Montealegre, Santiago, Unidos , San-Isidro and Sta. Cruz.

The municipality is being created in the year 1928 .

1. How San Francisco Got It's name

The name San Francisco is pointed to a saintly old man by the name of San Francisco who was highly respected by the people that when he died the place was named after him. Formerly known as Suangan

2. Location

Northeast of Cebu Province Island municipality comprising the Camotes group which is approximately 38 nautical miles from Cebu City

3. Boundary

North: Camotes Sea

South: Camotes Sea

East: Ponson Island

West: Camotes Sea

4. Populations as of 2007 Census=44,588

Number of Barangays:15

5. Land Use Classification (1998)

Agricultural	7,362,9493 has
Residential	1,538.2000 has
Commercial	30.1760 has
Institutional	16.3445 has
Tourism	85,6000 has
Forest Land	532.2000 has

Transportation/Utility	3.8050 has
Swamps/Mangroves	336.5907 has
Lake	685.0098 has
Total Land Area	10.596.8753 has

6. Topography

Gently sloping and rough terrain

7. Municipal GDP-1.449.64

8. Municipal Income-P60,000,000 as of 2010

9. Economy

Main Agriculture Products	corn, coconut, fruits
Major Source of Family Income	crops farming, fishing, salaries, Wages

10. Demography (2007)

Population	48,834
No of Households	9,062

11. Education

Public Elementary School	22
Private Elementary School	1
Public Secondary School	6
Day Care Center	17

Public Tertiary School	1
------------------------	---

12. Health

Hospital	1 (25 beds)
Rural Health Center	15
Rural Health Unit	1
Private Medical clinic	2
Private Dental Clinic	1
Ambulance	4
Rural Health Doctor	6
Rural Health Nurse	8
Midwife	13
Barangay Health Worker	196

13. Roads

Provincial Road	40,340 km
Municipal Road	1,527 km
Barangay Road	98.950

14. Water Works System

Level 111 waterworks system	2,146 hh
Level 11 water system	1,562 hh
Level I (Deep Well, shallow well, Open dug well)	5,002 hh

15. Power

CELCO

16. Communication

Post Office

Telegraph Office

Landline (Globe)

17. Cell Site

GLOBE

SMART

SUN CELL

PLDT

18. Financial Institutions

Rural Bank

Multi-Purpose

Lending Investors

NATCO

19. Scenic Spots

Lake Danao

White Sand Beaches
Communication Relay Towers
Caves
Arqui's Viewing Deck
Lake Danao Park

20. Delicacies

Dried Tilapia
Dried Danggit
Salbaro "Made of cassava"

21. Market Day

Poblacion Public Market	Sunday
Union Public Market	Wednesday (A.M.)
Consuelo Public Market	Wednesday (P.M.)
Sonog Public Market	Thursday (A.M)
Santiago Public Market	Friday (A.M)
Heminsulan Public Market	Friday (P.M)

22. Products

Soli-soli Amakan

Bags Sawali

Mats

Hats

23. Heritage Site

Kota

Bantayan sa Hari

Bandera Peak

24. NGO's

Plan International

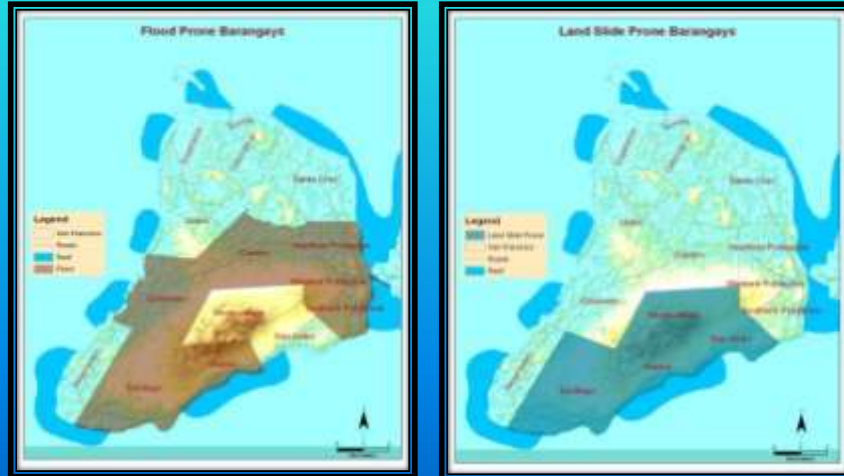
RAFFI

THE DIFFERENT HAZARDS OF SAN FRANCISCO

El Nino & Fire Affected Barangays



Flood & Land Slide Prone Barangays



Monsoon Wind Affected Barangays



Most Common Hazard that affects the barangay

The Different Hazards in San Francisco

