

## How to send photo in e-mail in original size from Windows

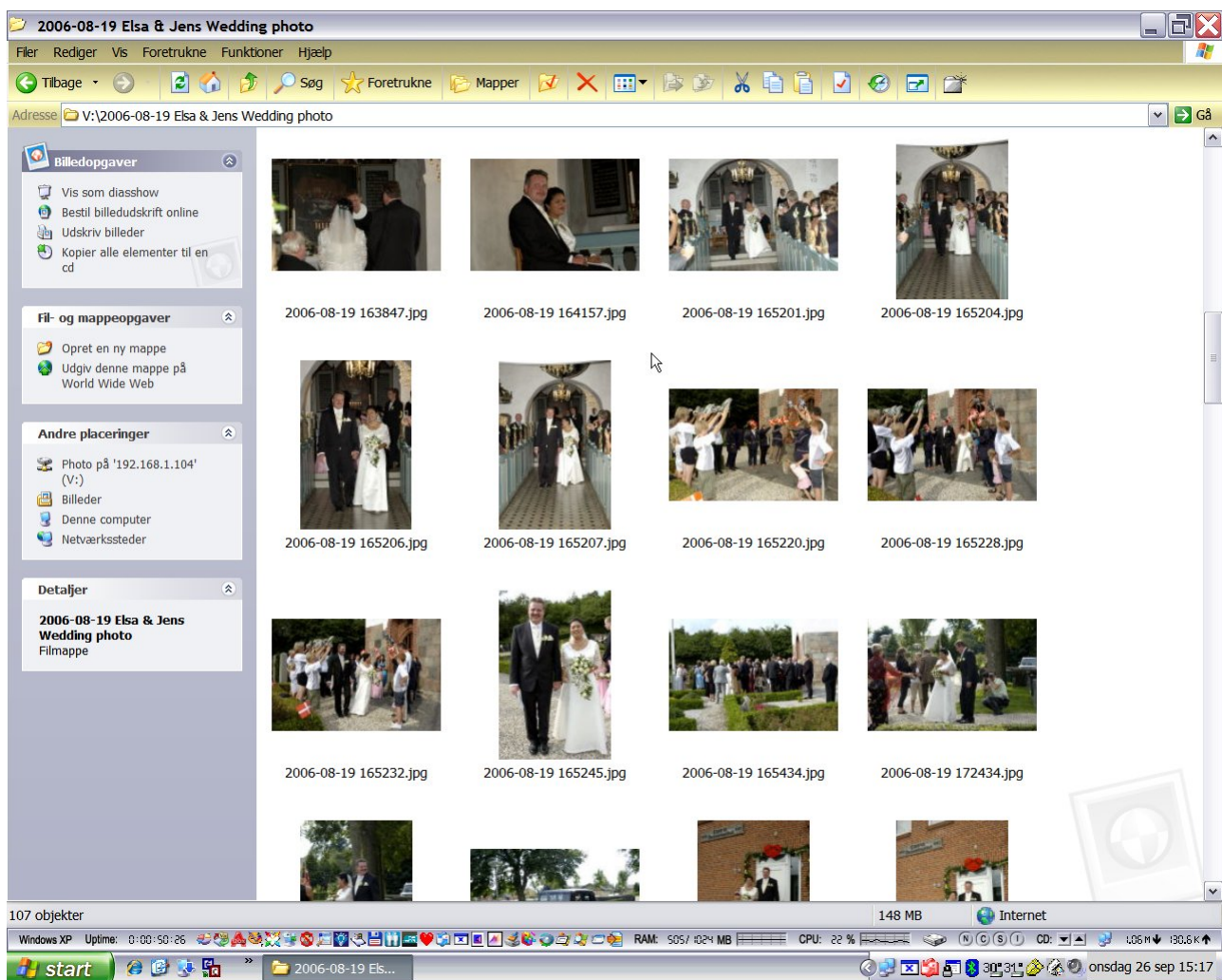
Updated 8. januar 2009

Never use Picassa, Nikon or other web-share based program, if you don't know that 200 % ☺

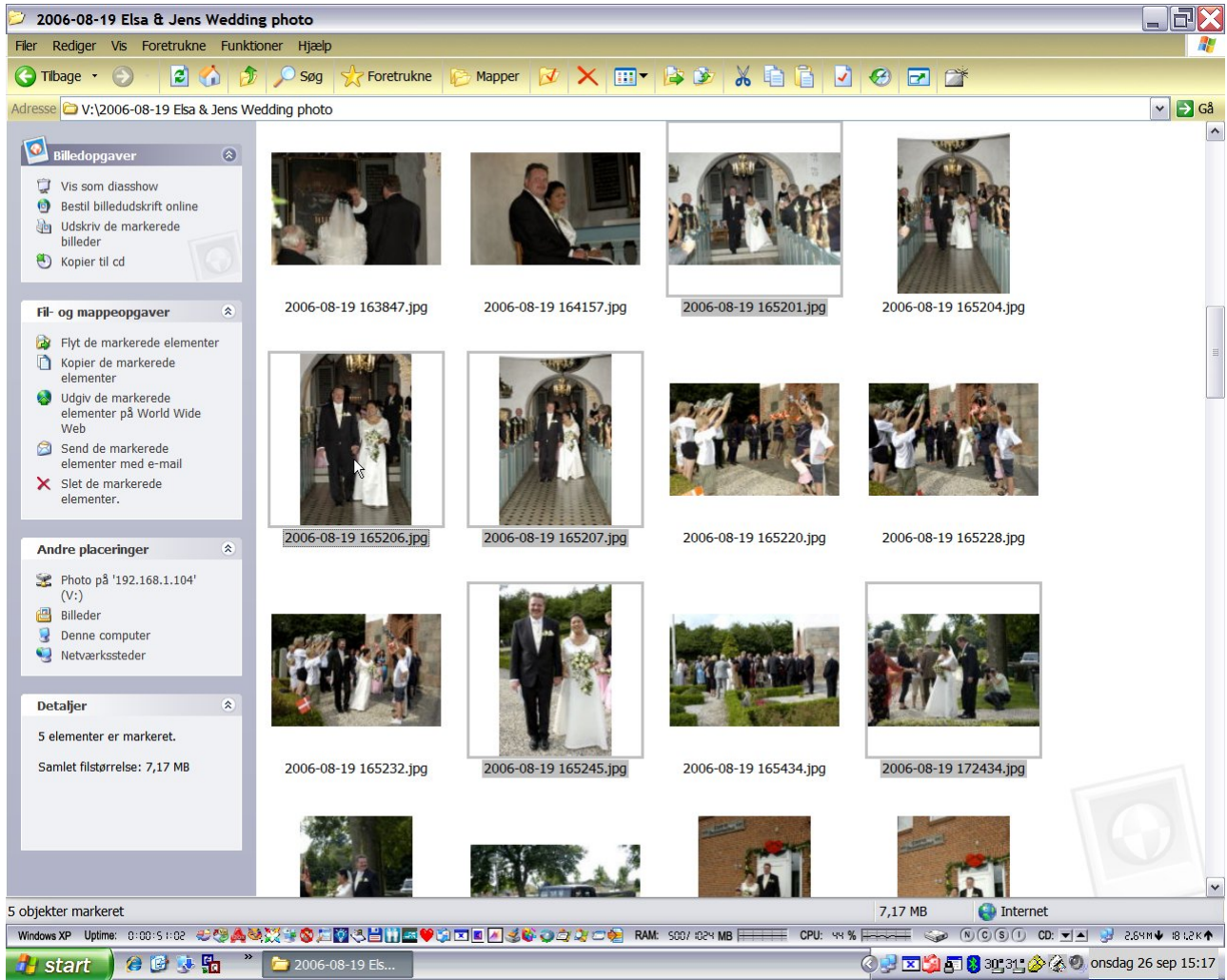
Even there's a lot of other possibilities for doing it, so here's the easiest and most safe way to do it ☺ :

Use the program, there's in Windows so:

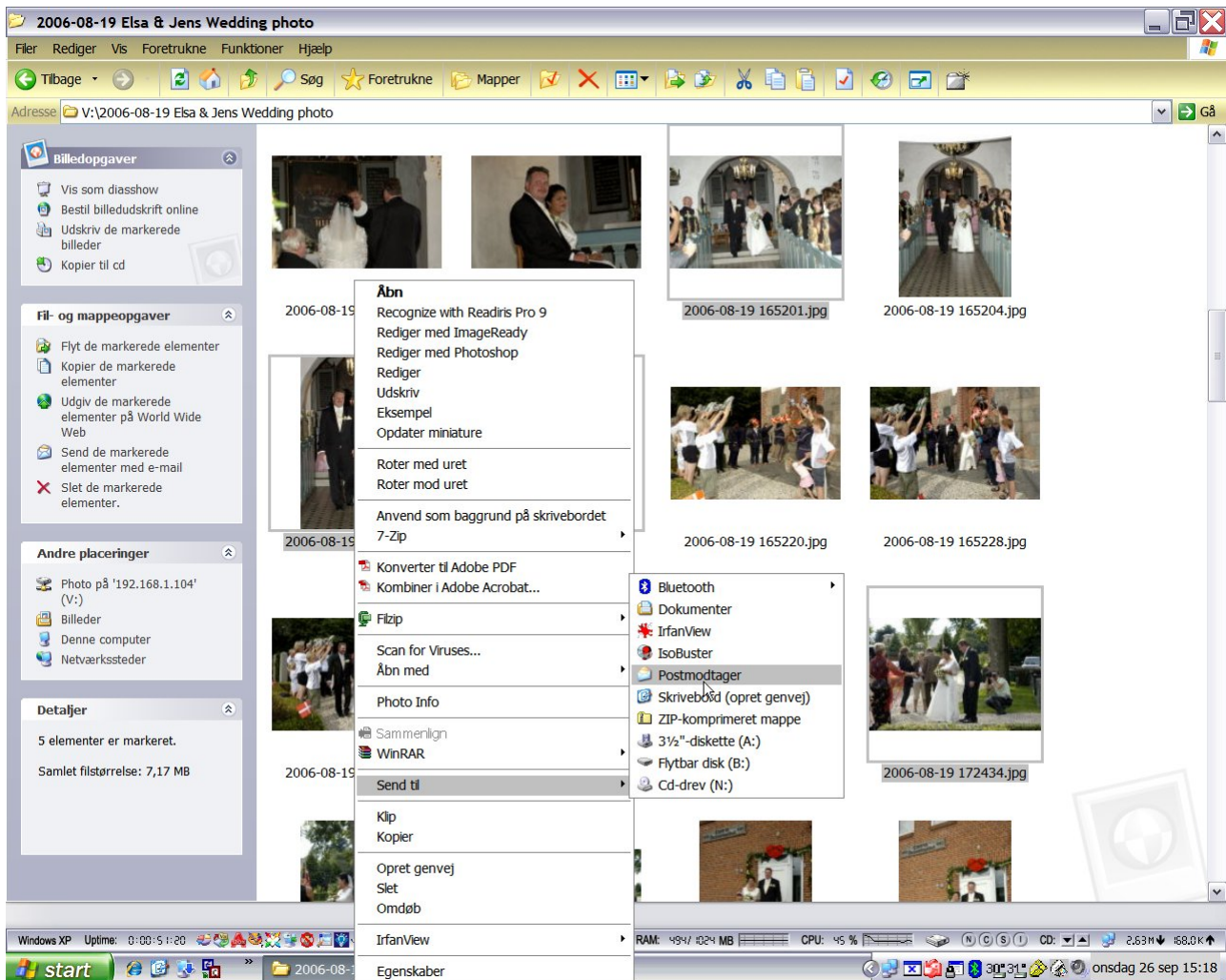
Open the directory where you have the photo you would like to send so:



Hold Ctrl down and left-click on all the photo, you will send. Those photo will so be marked so:



Release Ctrl without the marking will be erased and right-click on one of the marked photo. Now you get possibility for a choice and have to select "Send to – e-mail (or postprogram)" so (sorry my program show Danish ☺):

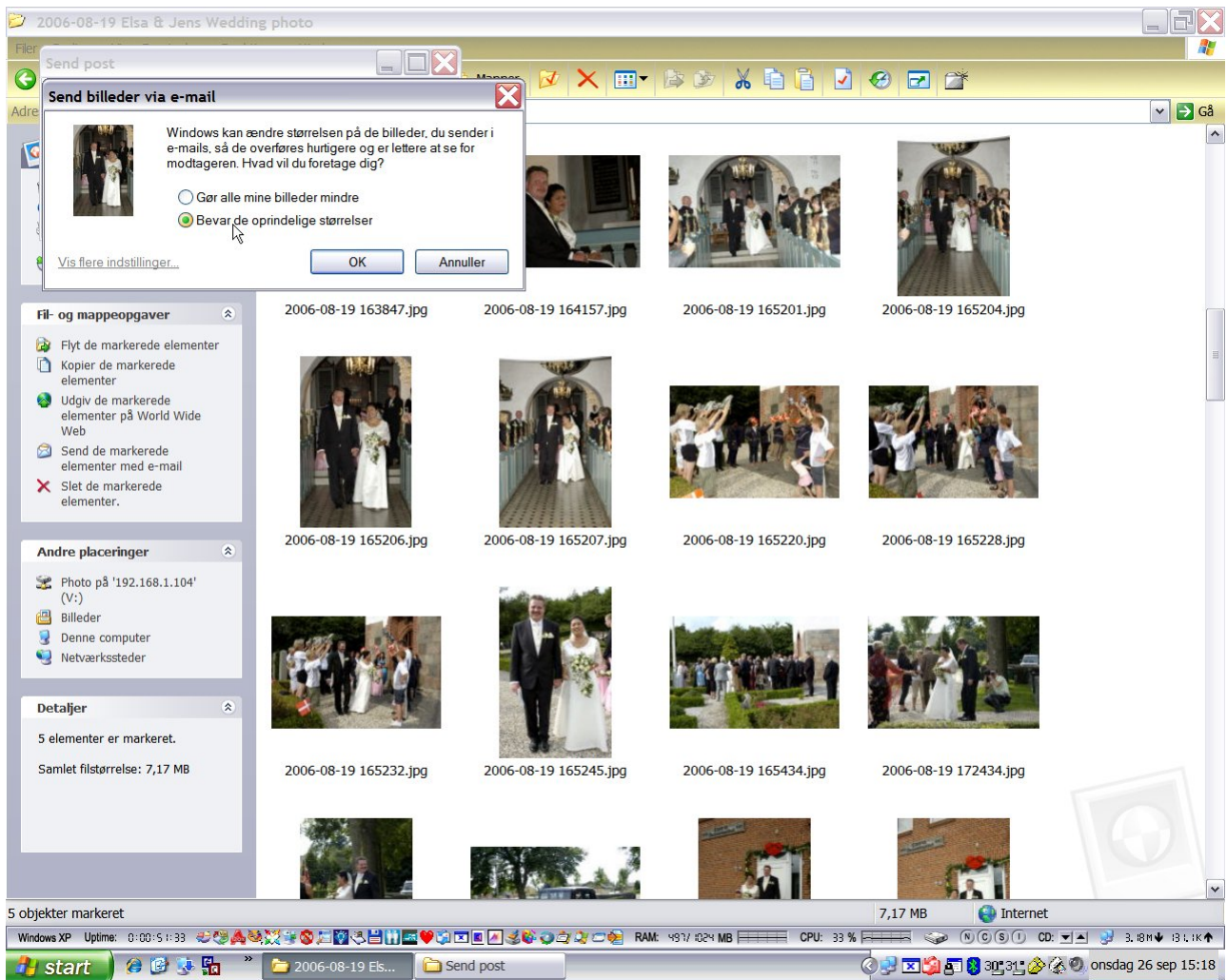


**OR if you have many photo to send** instead select "Send to ZIP" and so after a new ZIP file has been created go to that rightclick and this time select "Send to – e-mail (or postprogram)" so (sorry my program show Danish ☺)

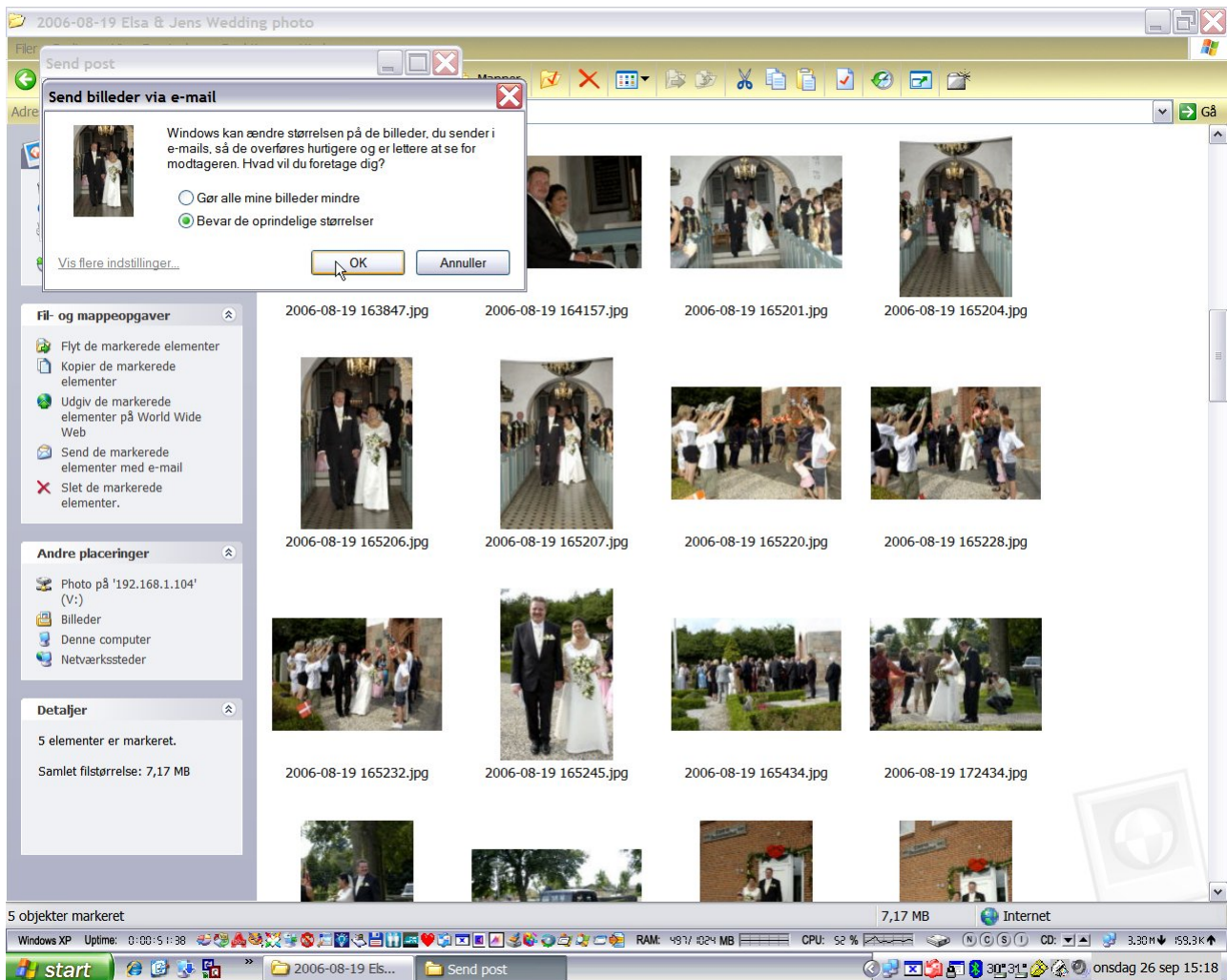
So next your postprogram will open and the ZIP file will be attached ready for sending.

Else just continue read ☺

Now again you will get a choice and have to choose "Keep the original size" so:  
(Again sorry my program is in Danish 😊)



Next click OK so:



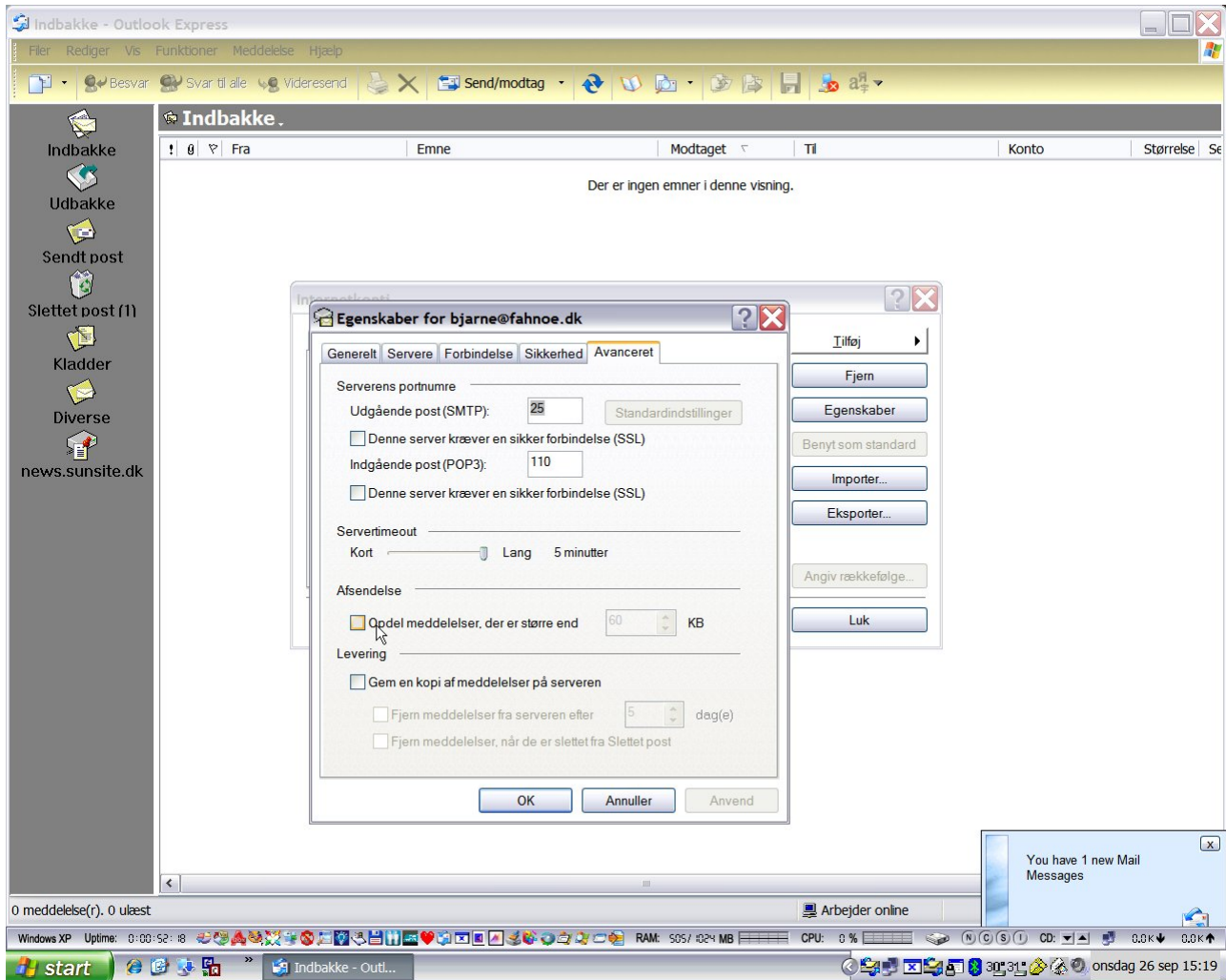
So next your postprogram will open and the files will be attached ready for sending.

You have to remember that many mail-hosts and or ISP don't accept sending big e-mails. Many accept only from few hundreds kb and some up to many hundreds mb, why it can be necessary to part the e-mail in "small pieces" so it automatically is being parted when you send it and again automatically is gathered when the receiver gets it.

It's different what mail-host and ISP accept, so you may control what's quilty for your system, and it can be from 250 kb up to 16000 kb or more.

In our system we can send mail up to 25 mb without doing anything, but if bigger we also have to part them. **We can recieve mail up to 100 mb in size.**

You have to made the setup for the size of the single part in your postprogram, and here you can see where and how to do it in Outlook Express:



At Last you have to be sure, that the receiver of your mail have a postbox which will accept the big e-mail. Many have a limit of 10 mb pr. mail, **but remmenber we can recieve mail up to 100 mb**

Just call or write, if you need my help and I will be glad for helping you

Many Regards  
Bjarne  
[bjarne@fahnoe.dk](mailto:bjarne@fahnoe.dk)